



SOUTHWESTERN US (ZONES 8-10)

When it comes to gardening in the southwest in USDA Zones 8-10, let's just say life gets 'complicated'. You would think that since your lowest temperatures are between 30-40 degrees that you live in an eternal spring, but temperature is only part of the story. Much of the Southwest is VERY dry and VERY bright - so you need plants that can take the sun and that are tolerant of lower water use. A great tip is to use larger containers or self-watering AquaPots® since they hold more water and won't dry out too quickly in the heat. Your soils are usually high pH (which can affect which plants do best) and clay based soils are most common, which is good, since clay is great at holding onto water. So, for water sensitive landscapes with high light levels, and sometimes blazing summer temperatures, you need tough and reliable flowers.

ANNUALS

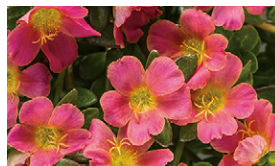
1. Boldly® *Pelargonium* Series
2. Luscious® *Lantana* Series
3. Mojave® *Portulaca* Series
4. Rockin'® *Salvia* Series
5. Vermillionaire® *Cuphea*
6. Meteor Shower® *Verbena*
7. Graceful Grasses® Purple Fountain Grass *Pennisetum*
8. Truffula™ Pink *Gomphrena*
9. High Noon™ *Euryops*
10. Proven Accents® Lemon Coral® *Sedum*



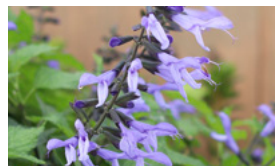
Boldly® *Pelargonium* Series



Luscious® *Lantana* Series



Mojave® *Portulaca* Series



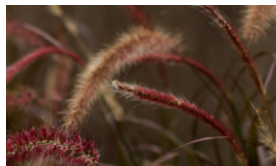
Rockin'® *Salvia* Series



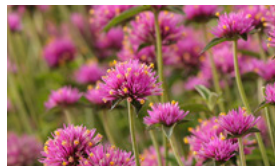
Vermillionaire® *Cuphea*



Meteor Shower® *Verbena*



Graceful Grasses® Purple Fountain Grass *Pennisetum*



Truffula™ Pink *Gomphrena*



High Noon™ *Euryops*



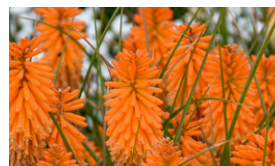
Proven Accents® Lemon Coral® *Sedum*

PERENNIALS

1. Fruit Punch® 'Classic Coral' *Dianthus*
2. Pyromania™ 'Orange Blaze' *Kniphofia*
3. Rock 'n Grow® 'Boogie Woogie' *Sedum*



Fruit Punch® 'Classic Coral' *Dianthus*



Pyromania™ 'Orange Blaze' *Kniphofia*



Rock 'n Grow® 'Boogie Woogie' *Sedum*

SHRUBS

1. Austin Pretty Limits™ *Nerium*
2. Rikki Tikki® *Lagerstroemia* Series
3. Peppy Le Pom® *Punica*



Austin Pretty Limits™ *Nerium*



Rikki Tikki® *Lagerstroemia* Series



Peppy Le Pom® *Punica*